

8th Annual Kaua'i Pain Conference

March 4-5, 2022

Pre-Conference Workshop: March 3



Exhibitor & Sponsor Prospectus

From
 NEUROINNOVATIONS
EDUCATION 

Royal Sonesta Kaua'i Resort
3610 Rice St., Lihue, HI 96766

KauaiPainConference.com

Contents

About	2
Overview	3
COVID-19 Requirements	5
Abstract Submissions	6
Audience	9
Advertising & Exhibit Packages	10
Exhibit Space	11
Online Exhibits	12
Sponsorships	
Lunch Symposium	13
Breakfast Symposium	13
Breakfast Sponsorship	14
Beverage Breaks	14
Welcome Reception	14
Sponsor Videos	15
Workshop Sponsorship	15
Exhibit Schedule	16
Hotel	17
Rules & Requirements	18 - 22
Sponsor & Exhibitor Application	23 - 25

About

The Kaua'i Pain Conference (KPC) is the premier pain conference on the Hawaiian Islands.

KPC began in 2014 following the opening of the Spine and Pain Center of Kaua'i (SPCK) as a sister conference to the renowned Napa Pain Conference (NapaPainConference.com). At KPC attendees to learn the latest in the treatment of chronic pain and emerging therapies, while enjoying a beautiful and relaxing setting.

KPC connects the best and brightest minds in the fields of pain management and neuroscience with learners and public policy officials. With a world-class Program Committee and insightful and dynamic presentations, this is your opportunity to connect with your clients from the Mainland and Hawai'i.

The Kaua'i Pain Conference Opportunity

The Kaua'i Pain Conference (KPC) presents the latest information in pain management and has become a forum to:

- Discuss the treatment of pain
- Establish best practices
- Learn and review emerging treatment options

Location

Royal Sonesta Kaua'i Resort Lihue
3610 Rice St, Lihue, HI 96766
T: (800) 220.2925

Upcoming Conferences

Neuromodulation: The Science

Feb 28-Mar 2, 2022 | Kaua'i, HI

NTSConference.com

29th Napa Pain Conference

Aug 18-21, 2022 | Napa, CA

NapaPainConference.com

Learn more about Exhibit and Sponsorship opportunities at **Neuromodulation: the Science** conference, February 28 - March 2, 2022. Discounts for exhibiting at KPC and NTS are available!



The Island of Kaua'i

Overview

Pain affects more lives than those affected by heart disease, cancer, and diabetes combined.

The Kaua'i Pain Conference offers a unique forum for sharing advances and standards in pain management and treatment for colleagues in all disciplines of medicine, with exceptional content presented by national leaders in pain medicine, patient safety, community health, and the regulatory environment. The appropriate assessment and treatment of pain has a far-reaching impact on morbidity, mortality, quality of life, and economics — of individuals, communities, and across the healthcare system.

The Kaua'i Pain Conference attracts a mix of senior-to-mid career physicians, private practice owners, advanced practice providers, researchers, industry, students and pharmacists. Specialties in attendance are pain management, family medicine, internal medicine, primary care, emergency, oncology, and anesthesiology.



(left to right) Eric Grigsby, MD, MBA
KPC Founder

Sen. Ron Kouchi
Hawai'i Senate President

Daniel Choi, MD
Spine & Pain Center of Kaua'i

PRODUCED BY

Neurovations Education

Neurovations Education designs conferences and targeted education in the areas of pain, neuroscience, treatment of chronic conditions, and emerging medicine. We create one-of-a-kind opportunities for learning, collaborating, and networking.

The Kaua'i Pain Conference is led by scholars, innovators and clinical experts in partnership with the Spine and Pain Center of Kaua'i, benefiting the 501(c)3 HealthRoots Foundation for Global Health.



Conference Contact

Neurovations Education

Education@Neurovations.com

T: (707) 260.0849

KauaiPainConference.com

Accreditation

ACCME / AMA

Neurovations Education is accredited by the ACCME to provide continuing medical education for physicians.

Neurovations Education designates this live activity for a maximum of 13.0 AMA PRA Category 1 Credits™. Physicians should claim only the credit commensurate with the extent of their participation in the activity.

Physicians of Osteopathy

The American Osteopathic Association (AOA) accepts AMA PRA Category 1 Credits™ as AOA 2-B credit.

Partnership Activities Beyond the Conference

Clinical Research

Our sister company, [Neuroventions Research](#) has led clinical trials with more than fifty companies, partnering with industry leaders and early-stage companies in medical device (Phase I-IV) and pharmaceutical trials (Phase II-IV), including first-in-man medical device trials, double-blinded and placebo-controlled trials.

Contact NeuroventionsResearch@Neuroventions.com for more information.

Napa Bioskills Cadaver Labs

Located in Napa, CA, our bioskills facilities have been an important site for teaching and developing new therapies since 1989.

Contact Education@Neuroventions.com for scheduling, logistics and pricing.



Pictured: Facilities at Napa Bioskills

Webinars

THURSDAYS, 5:30 PM PST

A sponsored webinar with Eric J. Grigsby, MD, MBA. The webinar will be produced by Neuroventions Education, and must take place during 2022.

RECORDINGS

After the live broadcast, webinars are archived, free to access for over 3,600 clinicians in the Neuroventions [Education Hub](#).

The Brain: A Complex, Multi-Scale Electrical System

NE
neuroelectrics

trying to decode the electrical brain; trying to understand what the electrical signals from the brain mean

Pictured: Webinar from Nov. 5, 2020 with Ana Maiques, CEO of Neuroelectrics

COVID-19 Requirements

REQUIREMENTS ARE EVOLVING AND SUBJECT TO CHANGE

COVID-19 Restrictions

Neuroventions Education looks forward to welcoming you to Kaua'i for the Kaua'i Pain Conference, delivered in-person and online. The health and safety of our community is our highest priority. Thank you in advance for abiding by these rules and restrictions.

Neuroventions Education is requesting proof of vaccination status to attend in-person. This information will be collected during the registration process, and validated onsite during badge pickup.

Requirements are subject to update and revision as federal, state, and local jurisdictions provide new and revised guidance.

Traveling to Kaua'i (Lihue Airport - LIH)

As per the County of Kaua'i:

- Travelers arriving on Kaua'i without valid proof of a negative COVID-19 test result or a vaccine record will be subject to the State of Hawaii's strict 10-day mandatory self-quarantine requirement. Guidelines are located at: <http://kauai.gov/covid-19>
- Travelers who are fully vaccinated and are flying from out-of-state to Kaua'i can avoid quarantine by creating a Safe Travels account and complete the mandatory State of Hawaii Travel and Health form at: <https://travel.hawaii.gov/>
- Travelers arriving on Kaua'i from Oahu, Maui County, or the Big Island of Hawaii are not subject to quarantine.

Attendee Requirements

All attendees must:

- Follow all COVID-19 protocols
- Monitor for signs and symptoms of COVID-19 before arriving at the conference
- Preregister. On-site registrations and substitutions cannot be permitted
- Wear a mask in all indoor meeting space.
- Have their temperature checked each morning.
- Classroom attendance is limited to individuals with full proof of vaccination.



Creating a Community

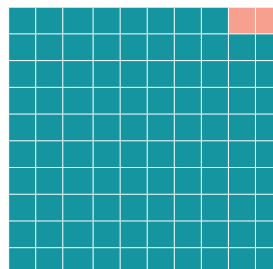
Making Pain a Priority

When were you last passionate about education?

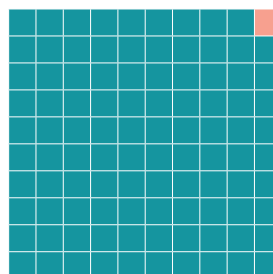
Through a focus on instructional design and learner needs, we create enthusiastic fans who return year-over-year and help to spread the word that quality content happens at KPC.

World-class speakers lead every session, continuing our tradition of excellence in education. The conference centers upon developments in pain management, science, and treatment, with forums for learner engagement.

Saturday's Community Forums included healthcare leaders from across the country, state officials, regional societies and local institutions, united around systems-level challenges impacting the treatment of patients with acute and chronic pain.



97%
of attendees recommend
the Kaua'i Pain
Conference to colleagues



99%
of learners change their
practice as a result of
attending



What Attendees Say

"As a result of attending [the Kauai Pain Conference], I'm better able to explain the risks of opioid medications."

"I will increase the use of functional evaluation metrics in my practice."

"I will more-often refer cases to a pain specialist."

What Sponsors Say

"We've never been taken care of better than at Kaua'i Pain - that's why we return each year."

Broadcast Online

Over 3,600 members

Neuroventions Education has over 3,600 active users in our online learning [Education Hub](#). Clinicians increasingly turn to Neuroventions Education for the best content in pain and neuroscience, from the brightest minds and industry leaders.

Web, email, and print campaigns reach tens of thousands of clinicians in pain management, neuroscience, regenerative medicine and family practice.

Welcome to the Education Hub



Immersive Online Learning Education live and on-demand

- Web-based access, viewable from any device
- Interactive audience chat
- Live, interactive Exhibit Hall, viewable up to 60 days after the conference
- Industry-leading ePoster Hall
- Games and digital badges to foster engagement
- Attendee networking directory
- Chat forums with email subscriptions
- Enhanced learning with note-taking in sessions, timestamped to the corresponding part of a presentation
- Real-time tech support

Lead Generation

See who visited your Digital Booth and follow up with them at a later date.

Note: Attendees must authorize information sharing when entering your booth

Last Name	First Name	Email Address	Number of visits	Last Visited Timestamp
Bacon	William	wbacon@digitalinc.com	3	2020-04-24 07:13:33
Outlett	Jenna	joutlett@digitalinc.com	3	2020-04-16 14:15:53
Dicong	Cody	cdicong@digitalinc.com	1	2020-04-10 14:11:26
DeAngelo	Danielle	ddeangelo@digitalinc.com	2	2020-04-21 13:47:38
Sweeney	Patrick	psweeney@digitalinc.com	11	2020-04-17 14:18:20
Plaker	James	jplaker@digitalinc.com	14	2020-04-27 10:50:34
Hagen	Nicholas	nhagen@digitalinc.com	51	2020-04-25 12:39:34
Newman	James	jnewman@digitalinc.com	28	2020-04-25 12:59:16
Zambotti	Brian	bzambotti@digitalinc.com	64	2020-04-27 11:44:18
Reilly	Patrick	preilly@digitalinc.com	41	2020-04-23 16:51:02
Fortney	Ray	rfortney@digitalinc.com	5	2020-04-23 16:27:58
Lukari	Arina	alukari@digitalinc.com	1	2020-04-10 14:11:26
Zambotti	Brian	bzambotti@digitalinc.com	4	2020-04-15 12:01:27
Green	Tom	tom.green@ig.com	1	2020-04-10 14:11:26
Kyle	Amanda	akyle@trp.com	1	2020-04-10 14:11:26
Johnson	Jessica	jjohnson@the-online.org	1	2020-04-10 14:11:26
Baugh	Suzanne	sbaugh@stanlevents.com	1	2020-04-23 14:02:43
Power	Jeanie	jpower@coventrygroup.com	1	2020-04-10 14:11:26

Peer-to-Peer Networking

Online attendees can connect with each other through the participant directory, discussion forums, and direct messaging.

First Name	Last Name	Company	City	State	Contact
Avinash	Ramchandani	RPI	Santa Rosa	CA	email@email.com
Elizabeth	Roskerson	Harvard Medical School	Boston	MA	email@email.com
William	Rosenberg	Center for Pain and Supp	Lexington	KY	email@email.com
Lisa	Stearns	UCSF	Phoenix	AZ	email@email.com
Lawrence	Puree	UCSF	San Francisco	CA	email@email.com

System	Device	Browser	Flash	Bandwidth	Streaming
System Checker	Device	Browser	Flash	Bandwidth	Streaming
Device	Passed	Compatible web browser: Chrome 69	Skipped	Passed	Passed
Browser	Passed	You are using a compatible desktop device.	Flash is not required, your browser supports HTML5 video rendering.	Passed	Passed
Technical Support	Cookies	Passed	Flash	Bandwidth	Streaming
Cookies	Passed	Your browser is accepting session cookies.	Skipped	Passed	Passed
Flash	Skipped	Flash is not required, your browser supports HTML5 video rendering.	Bandwidth	Streaming	Passed
Bandwidth	Passed	Estimated at 20.561 Mbps. You have ample bandwidth to receive high-d streaming media from Digital Live Events Platform	Streaming	Walling	Passed
Streaming	Walling	[2/2] Test of HLS via NewCloud completed, passed.			

Pictured: Automated tech review checklist

Audience

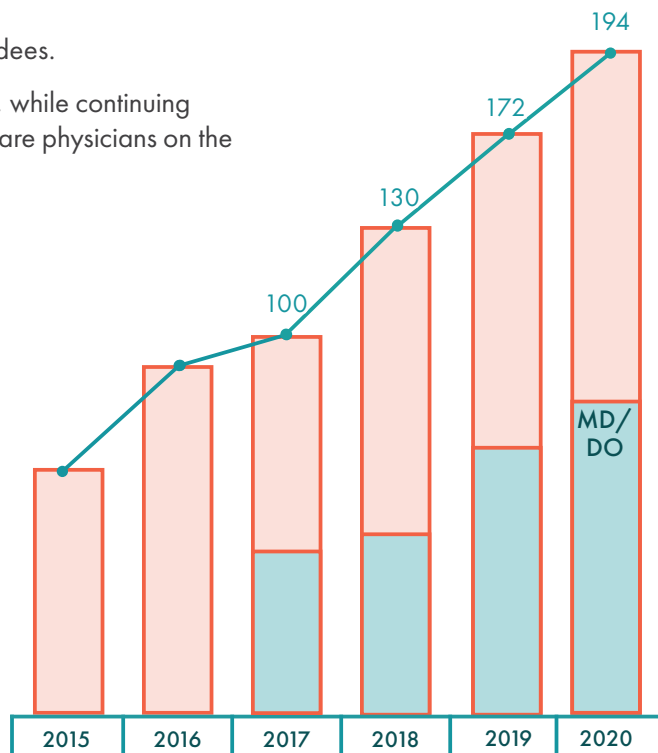
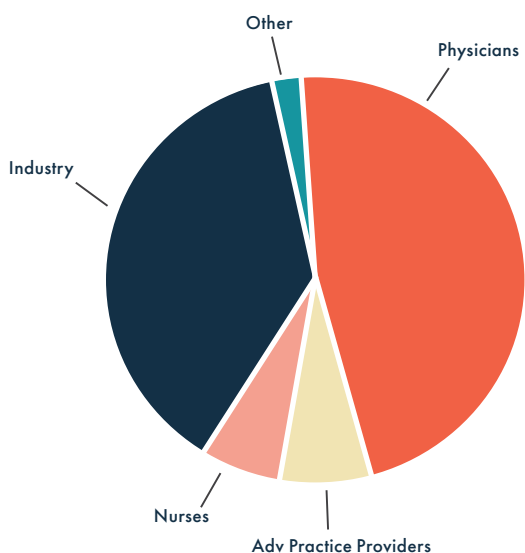
The Kaua'i Pain Conference partners with the Hawai'i IPA, Hawai'i Pacific Health/Wilcox Hospital, Tripler Army Medical Center, and Hawai'i Medical Services Association (HMSA) to build attendance.

Web, email, and print campaigns reach tens of thousands of clinicians in pain management, neuroscience, regenerative medicine and family practice.

2020 Attendance

2020 was the last in-person event, attracting over 190 attendees.

The meeting attracted more pain specialists from the mainland, while continuing growth with internal medicine, family practice, and palliative care physicians on the Islands.



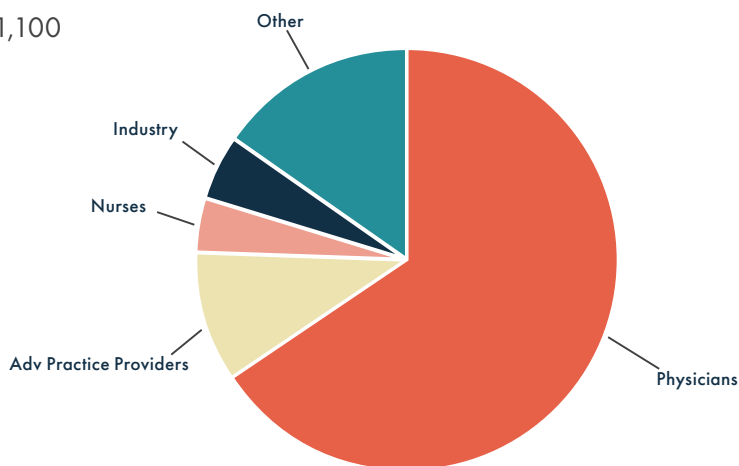
The data shown is for in-person audience only.

2021 Attendance

Last year's Conference was a virtual event attracting over 1,100 attendees.

Top Specialties

1. Pain
2. Anesthesiology
3. PM&R
4. Family Medicine
5. Palliative Care
6. Emergency Medicine
7. Psychiatry
8. Other



The data shown is for 2021 virtual audience.

Advertising & Exhibit Packages

The best deals, exclusive items, and priority selections of everything from booth locations to hotel room assistance.

We're committed to making this program a success for you.

Don't see a package you like?

Let us know, and we'll see what we can achieve. Contact the conference planning office at Education@Neuroventions.com or 707.260.0849 to discuss sponsorship and exhibit opportunities.



	PLATINUM \$37,495	GOLD \$24,995	SILVER \$12,495
Private Meeting Space - Limited Availability Exclusive Package Benefit	•	•	•
Lunch Symposium - Limit 1 Per Day Includes A/V, meal options may incur additional expense Exclusive Package Benefit	•		
Breakfast Symposium - Limit 1 (Saturday only) Includes A/V, meal options may incur additional expense Exclusive Package Benefit		•	
Option to attend the Faculty Dinner (Thursday, March 3) Exclusive Package Benefit	3 seats	2 seats	1 seat
Premium Exhibit space Exclusive Package Benefit	10 X 20	10 X 10	Table Top
Priority to choose exhibit location Exclusive Package Benefit	•	•	•
Sponsor Video - Played online during breaks	3	2	1
Online Exhibit	Digital Booth + Banner	Digital Booth + Banner	Digital Booth
Integrated Online Video Chat	•	•	•
In-Person Registrations	8	6	4
Registration lists of in-person and online conference attendees <i>(subject to regulatory requirements for disclosability)</i>	•	•	•
Recognition on conference signs	•	•	•
Recognition on conference website	•	•	•
Recognition in program materials	•	•	•
Ribbons for your company representative	•	•	•



10' x 20' Booth

PLATINUM SPONSOR ONLY

- 10' x 20' segmented floor space
- Premium locations
- Eight (8) Exhibitor badges
- Draped 6' x 30" table
- Two (2) chairs, trash can
- Online Base Listing in Exhibitor Showcase

10' x 10' Booth

\$5,945

- 10' x 10' segmented floor space
- Premium locations
- Three (3) Exhibitor badges
- Draped 6' x 30" table
- Two (2) chairs, trash can
- Online Base Listing in Exhibitor Showcase

Table Top (72" x 30")

\$2,945

- 6 linear feet of exhibit space
- Draped 6' x 30" table
- Two (2) Exhibitor badges
- Two (2) chairs, trash can
- Online Base Listing in Exhibitor Showcase

All sponsors and exhibitors will receive a registration list of in-person and online conference attendees.

(Subject to regulatory requirements for disclosability)

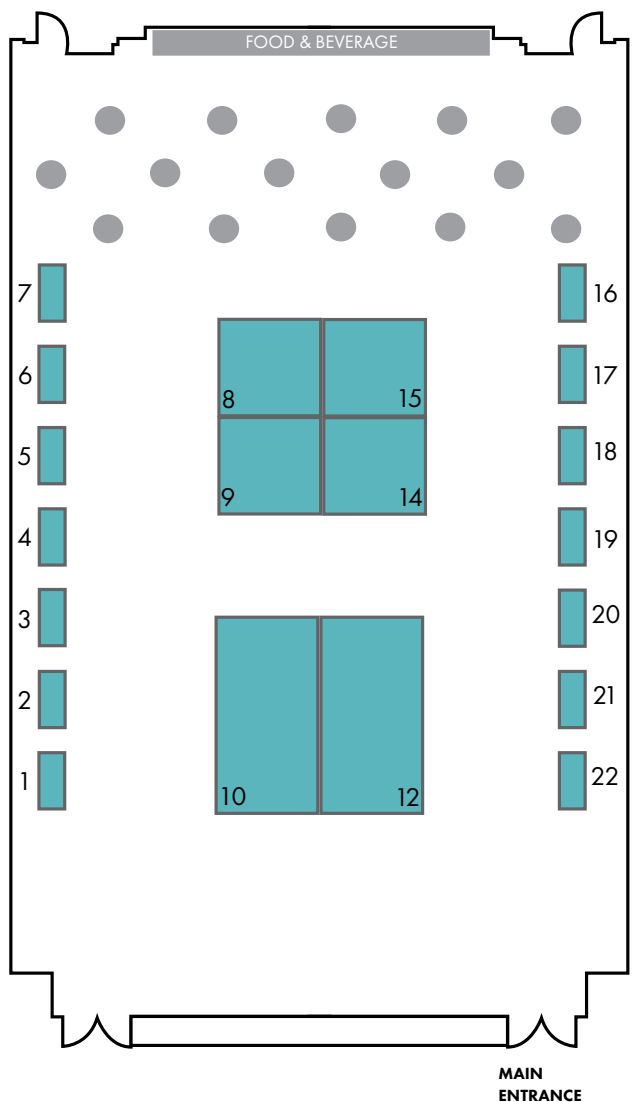
Exhibits

The exhibit hall hosts meals, coffee, and mid-day breaks. Exhibitors are well placed to participate in conference activities and network with attendees.

Exhibit spaces are available at the 8th Annual Kua'i Pain Conference and are expected to sell out.

Don't delay; secure the space your company wants by being first in line.

Email Education@Neuroventions.com today.



*Floor Plan subject to change.

Online Exhibit Opportunities

Enjoy months of exposure to new and returning clinicians.

Beginning in December, exhibits will be published online on a rolling basis, and remain accessible online for 30 days post-conference. Maximize your visibility by applying ASAP.

Attendee traffic is directly related to

- 1) the length of time an exhibit is published, and
- 2) the position of the exhibit in the directory.

Online

Digital Booth..... \$4,495

Create an engaging space with embedded banners, videos, and branding.

Digital Booths include all of the features of the Tabletop and appear ahead of them in the exhibit order. Add a 1200x300 banner of your own design, booth graphics, and include multiple handouts and company resources.

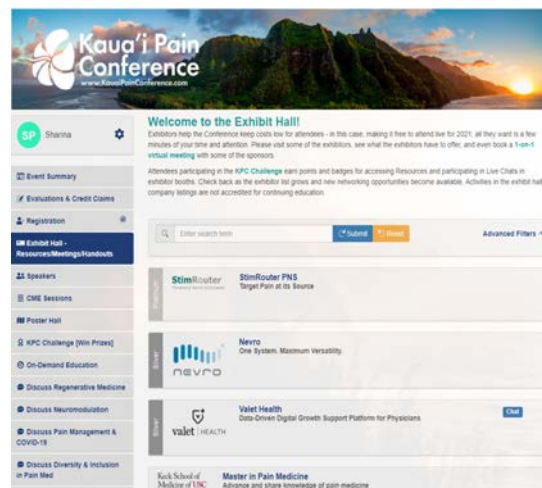
Digital Table..... \$2,495

Digital Tabletops appear ahead of base listings. They also include contact information for multiple company representatives, multiple web links, and a single downloadable handout.

Base Listing..... \$745

Base Listings appear after Digital Tabletops and include a company logo, expandable company description, a link to your website and contact information for a company representative.

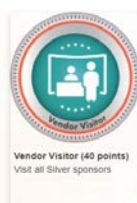
Base Listings are included for in-person Booths and Table Tops.



Pictured: Exhibitor Showcase

Incentives

Attendees are incentivised to view exhibitors and interact with sponsors through conference achievements and associated prizes.



Symposium Sessions

Let us help you reach your audience with a breakfast or lunch symposium sponsorship guaranteed to get attention.

Unopposed time on the program for your company to reach attendees.

You provide the speakers. We'll handle the logistics.

Includes:

- A/V
- Buffet breakfast or lunch of KPC's choice
- Unopposed time on the schedule
- Acknowledgment in the program materials, on signs, and in the agenda

Symposium content cannot be certified for CME or CE credit.

Alternate A/V setups, specific meal and decor requests can be accommodated at additional expense.

Lunch Symposium **\$23,995**

Limit 1 per day | Friday, March 4

Saturday, March 5

and up, with options

Breakfast Symposium **\$12,495**

Limit 1 | Saturday, March 5

and up, with options



"Our VP of Marketing felt it was our best lunch yet!" - previous sponsor

"We don't get that level of service anywhere else. We'll be back next year." - previous sponsor

"This was an incredibly successful lunch for us." - previous sponsor



Sponsor Food & Beverage

Make sure attendees start the day with your company in mind by sponsoring a breakfast, or earn their favor by feeding their need for coffee throughout the day. Sponsorships include prominent signs with the sponsor's logo and messaging displayed throughout a sponsored break, and acknowledgment in the printed program guide.

All food and beverage charges will be paid directly from the Kaua'i Pain Conference to the host hotel.

Breakfast Sponsorship \$3,995

Limit 1 | Friday, March 4

and up, with options

Art due: January 24

Includes sponsor acknowledgment, branded banner in the dining space, and sponsor acknowledgment included with each meal.

Beverage Break \$2,795

Limit 1 per break | 6 available

and up, with options

Art due: January 24

Includes sponsor acknowledgment and logo or graphics on printed signs at the break.



Welcome Reception \$9,495

Limit 1 | Friday Evening, March 4

Art due: January 24

Hors d'oeuvres, wine and your company's message are on the menu at this unique opportunity.

All KPC faculty and 86% of learners attend the welcome reception. Hosted in the courtyard between the pool and the ocean, attendees, exhibitors and guests relax, eat, and network.

Stand out from the crowd with signs and a full-color graphic highlighting your organization's event sponsorship. The graphic can include your logo and company messaging.

Online Sponsored Video

Sponsored Videos played during breaks \$2,995

Exclusive to Platinum, Gold and Silver Sponsors.

Video due: January 24

Make a splash with online viewers with a video of your design. Videos cannot exceed five (5) minutes in length



Hotel Room Key Card

Key Card \$5,995

Art due: January 24

Put your brand into the hand of every attendee at the host hotel and be the first and last thing attendees think about each day. Cost is all inclusive - you provide the art - we'll handle the rest.



Pre-Conference Workshop

Thursday, March 3, 2022

The conference is preceded with a Intrathecal Drug Delivery Lab focusing on:

- Pharmacokinetics and Pharmacodynamics of the Most Frequently Used Intraspinal Drugs for Pain & Spasticity
- Patient Selection & Preparation
- Risks & Benefits, Long-term Effects, & Troubleshooting Intrathecal Drug Delivery Systems
- Dosing Strategies for Pain, Dose Escalation & the Use of Concomitant Sedating Drugs including Alcohol
- Ultrasound & the Reservoir Refill Procedure
- Recognizing & Managing Serious Adverse Events (SAE): Pocket Fills, Over/Under Dose & Granulomas
- Hands-on, Proctored Practice lab



Exhibition Schedule & Logistics

Dates	Exhibitor Registration	Exhibit Installation	Exhibit Hours	Exhibit Dismantle
Thursday, March 3	2:00 pm - 6:00 pm	2:00 pm - 6:00 pm		
Friday, March 4	6:00 am - 7:00 am	6:00 am - 7:00 am	7:00 am - 5:30 pm	
Saturday, March 5			7:00 am - 4:45 pm	5:00 pm - 8:00 pm

* Schedule subject to change

Setup & Tear-down

Exhibitors are responsible for return shipping and it is important to bring your own shipping supplies. The hotel does not supply waybills, and shipping forms can be difficult to find on the island.

Exhibits are required to remain in place throughout the conference. Exhibits may not be dismantled or packed prior to the official closing of the exhibition, and exhibit dismantling must be completed during the hours specified.

Contact Education@Neurovations.com in the event that special arrangements are required.



Space Assignments

Exhibit locations are prioritized by the level of support, date that payment is received, special needs and compatibility of exhibitors' products/services, and your company's history of exhibiting at the Kaua'i Pain Conference.

Request your space by completing the Exhibitor Application Form at the end of this document.

Shipping

Exhibitors are responsible for shipping their materials to and from the conference.

It is important to bring your own shipping supplies to Kaua'i. The hotel does not supply waybills, and shipping forms can be difficult to find on the island.

Labels

Boxes/packages may be sent for arrival 48 hours prior to Group arrival (no earlier than March 2) and must be marked with the following:

Attention: Event Department

Conference: Kaua'i Pain Conference

On Site Contact: [Your Name]

Exhibiting Company: [Name of Your Company]

Arriving: [Date of Arrival]

Box: _ of _

Royal Sonesta Kaua'i Resort

3610 Rice Street, Lihue, HI 96766

(808) 246-5017

Location & Accommodations

Royal Sonesta Kaua'i Resort

3610 Rice St, Lihue, HI 96766

T: (808) 245.5050

The Kaua'i Pain Conference will be held at the Royal Sonesta Kaua'i Resort on Kalapaki Beach, just two miles from Lihue Airport. The hotel offers rooms with spectacular views, free Wi-Fi, floor-to-ceiling windows, balconies, and a complimentary airport shuttle.

The property features six restaurants, most with ocean views, and is located a short walk from additional dining and entertainment. Outdoors, there's a pool with a bar and picnic area. Surf lessons, boat and car rentals can be made on site, and the spa, fitness center and kids' activity club ensure that there's something for everyone in your group.



[Click here to book your room](#)

Discounted Rooms for Exhibitors & Attendees

\$299 AND UP, + TAXES & FEES



Rules & Regulations for Exhibiting Companies

Any actions that are not in accordance with this agreement may result in the removal of the exhibiting company and its representatives from the activity site, in which case no refund will be allowed. Further, additional measures such as banning the representative and/or vendor from future involvement in Neurovations Education activities may occur.

CME activities, including facility arrangements, participant selection, program content, and format are the exclusive responsibility of Neurovations Education, which reserves the right to add, delete, or change any terms, conditions, regulations, and decisions pertaining thereto. Neurovations Education reserves the right to exercise its sole discretion to accept or refuse a prospective exhibitor's application or registration.

Exhibitors are responsible for obtaining appropriate licenses for any copyrighted materials, audio, and/or video utilized as part of an exhibit.

ACCME STANDARDS FOR INTEGRITY AND INDEPENDENCE IN ACCREDITED CONTINUING EDUCATION

The applying company agrees to adhere to the ACCME Standards for Integrity and Independence in Accredited Continuing Education.

Arrangements for advertising will not influence educational planning, faculty selection, delivery, and evaluation of accredited education, or be a condition of the provision of financial or in-kind commercial support. Nor will advertisers interfere with the presentation of the education. Commercial entities may not discuss or influence the planning or presentation of CME content with speakers or planners of the activity.

Providing grants and/or other commercial support (financial or in-kind) for Continuing Medical Education (CME) activities does not influence booth space or assignment decisions. Exhibiting or otherwise advertising is not contingent upon the provision of an educational grant or other commercial support and may be purchased even if no grant is provided. Similarly, commercial support may be provided without advertising and is not contingent upon agreements to advertise or exhibit at the event.

Company representatives will not engage in sales or promotional activities while in the space or place of the CME activity (regardless of in-person or online delivery). Accordingly, any time a Company representative enters the educational space to observe the educational activity, they must refrain from asking questions or leading the discussion in any way that could be construed as sales or promotional activity.

RESPECT FOR THE HOST LOCATION

Exhibitors may not install any permanent fixtures or deface property in any way. Upon completion of the activity, exhibitors are expected to leave the exhibit space in the same condition that it was received.

Items and services, such as extra trash cans or wired internet, maybe contracted directly with the property and property's contractors (as applicable and available) at exhibitor's expense.

Balloons are not permitted as part of an exhibitor's display.

Photographing another exhibitor's booth is grounds for cancellation of an offending exhibitor's booth, at sole discretion of Neurovations Education. Exhibitors will not be entitled to a refund in such a situation.

Rules & Regulations for Exhibiting Companies

EXHIBITOR STAFF

All members of an exhibitor's company attending the Conference must be pre-registered for the event. COVID-19 regulations prohibit attendees from registering on site.

All company employees, representatives and guests are required to wear conference-issued exhibitor badges at all times, in an unobstructed manner, while in the function space. Badges may not be altered in any manner. Company badges are not acceptable in lieu of official conference badges.

Exhibits must be staffed each day during exhibit hours. Representatives are expected to dress and conduct themselves in a professional manner consistent with a medical education meeting.

Representatives and employees of Neuroventions Education shall have free access to any exhibit at all times in the performance of their assigned duties.

Exhibits are required to remain in place during the conference. Contact Education@Neuroventions.com in the event that special arrangements are required. No exhibit may be dismantled or packed prior to the official closing of the exhibition, and exhibit dismantling must be completed during the hours specified.

EXHIBITOR MATERIALS

Promotional materials may be reviewed by Conference staff and are subject to removal if deemed offensive, dangerous or misleading. Any such removal will be made at the discretion of Conference staff and removal of such will not entitle an exhibitor to refunds or return of payment of any kind. A vendor may submit new materials for review and reinstatement, provided that there is suitable time to administer a replacement.

Company displays and materials are limited to the space and place of their exhibit. Materials may not be distributed outside of a company's exhibit space and booth/table displays may not extend beyond square footage associated with a vendor's exhibit location.

BOOTH DIMENSIONS

Exhibit displays may not exceed associated table-top or booth dimensions:

- 10' x 10' or 10' x 20' for booths
- 6 linear feet for table-tops

For example, a table-top exhibit with 10' backdrop is not permitted and would need to be dismantled. If an exhibitor refuses to modify or dismantle a display to comply with this policy, the exhibitor's participation in the event will be canceled, and the display will be removed for them without refund.

Company displays and materials are limited to the space and place of their exhibit. Materials may not be distributed outside of a company's exhibit space and booth/table display.

Rules & Regulations for Exhibiting Companies

AUDIOVISUAL USAGE IN EXHIBITS

Audiovisual equipment as part of a display is acceptable; however, sound equipment must be regulated so that it doesn't disturb neighboring exhibitors (providing headsets for attendees is acceptable). In addition, spectators may not obstruct aisles or interfere with access to other exhibits.

Conference staff reserve the right to determine when sound levels from equipment constitutes interference with others or is unacceptable. In such an event, sound must be reduced or equipment will be removed at the exhibitor's expense.

Exhibitors are responsible for obtaining appropriate licenses for any copyrighted materials, audio, and/or video utilized as part of an exhibit.

ANCILLARY EVENTS

No activities shall be scheduled by the Company, its employees, agents, or representatives to take place on the premises and during the time of the Conference without the express written permission of Neuroventions Education.

Ancillary events may not conflict with any educational sessions, exhibit hours, corporate showcases, or corporate symposium scheduled during the Conference.

Scheduling, including transportation, must begin no sooner than 30 minutes before or after any activity during the Conference.

- Scheduling, including transportation, must begin no sooner than 30 minutes before or after any activity during the Conference.
- All events require prior approval from Neuroventions Education in writing.

GIVEAWAYS

Giveaways of items with company logos, brand logos, or slogans readily visible are NOT permitted at the Kaua'i Pain Conference.

Companies regulated by the Pharmaceutical Research and Manufacturers of America's (PhRMA) codes governing interactions with healthcare professionals and the Advanced Medical Technology Association (AdvaMed), will be limited to giveaways allowed under such rules and codes of conduct. These items are those designed primarily for the education of patients or healthcare professionals. Due to these codes, companies regulated by PhRMA or AdvaMed are not allowed the following giveaways: pens, pencils, notepads, small desk clocks, pocket calculators, desk calendars and mouse-pads.

Prescription drug samples may be distributed to physicians only in accordance with the Prescription Drug Marketing Act.

Distribution of approved items must not create a nuisance or cause interference with adjoining exhibits.

Rules & Regulations for Exhibiting Companies

DISPLAY OF DRUGS AND DEVICES NOT APPROVED BY THE FEDERAL FOOD AND DRUG ADMINISTRATION (FDA)

Any investigational product that is graphically depicted within an exhibit or marketing material is subject to the following rules:

- Contain only objective statements about the product,
- Contain no claims of safety, effectiveness, or reliability,
- Contain no claims about how the product compares with marketed products,
- Must be accompanied by directions for becoming an investigator and a list of investigator responsibilities, and
- Prominently display the statement “Caution— Investigational Device—Limited to Investigational Use” on the product in a type size that is easy to read.

Exhibitors agree not to sell, promote, or distribute in any fashion any non-approved product, in whole or in part, during or in connection with the meeting to U.S. attendees. Exhibitors may, however, conduct sales activities for, and market and promote, non-approved products, solely to attendees who are non-U.S. doctors, exclusively for sales outside the United States, provided that such activities are in compliance with the relevant laws of any such non-U.S. jurisdiction. In accordance with U.S. Law, exhibitors may not sell and deliver Non-FDA approved products to U.S. physicians at the meeting. Exhibitors may sell and deliver Non-FDA approved products to non-U.S. physicians as long as they adhere to all applicable U.S. laws and regulations.

You can find further information and guidance on the subject at www.fda.gov.

Penalties for non-compliance to the FDA rules and regulations include:

- Neuroventions, at its sole discretion, will immediately shut down the exhibitor’s booth for the remainder of the meeting.
- The exhibitor will not be entitled to a refund.
- The exhibitor may face legal action from the U.S. government for failing to comply with the appropriate rules and regulations.
- The exhibitor may not be invited to participate in future meetings.

Easily visible labels stating “This device is not cleared by the FDA for distribution in the United States” or “This device is limited by federal law to investigational use only” must be placed near the device or drug and on any graphic depicting the device or drug.

Rules & Regulations for Exhibiting Companies

EVENT PHOTOGRAPHY AND/OR VIDEO

Photographs and/or video will be taken by Neurovations Education/KPC. By taking part in this event you grant the event organizers full rights to use the images resulting from the photography/video filming, and any reproductions or adaptations of the images for fundraising, publicity or other purposes to help achieve the group's aims. This may include (but is not limited to) the right to use them in printed and online publicity and social media applications.

INDEMNIFICATION

Neurovations Education, the Kaua'i Pain Conference, and any of its officers or staff members will not be responsible for the safety of the property of the Company from theft, damage by fire, accident, or other causes. Neither Neurovations Education, the Kaua'i Pain Conference, and any of its officers, staff, agents, or representatives, shall be held accountable or liable for, and the same are hereby released from accountability or liability for, and damage, loss, harm, or injury to the person or any property of the Company from theft, fire, or other causes.

Company shall indemnify and save harmless Neurovations Education from any and all losses, costs, damages, liability and expenses (including reasonable attorney fees) that may arise as a result of the acts or omissions of officers, directors, employees, or agents exhibiting at the CME conference.

ACCESSIBILITY

Advertisers are reminded to construct their exhibit spaces in full compliance with the Americans with Disabilities Act (ADA).



Exhibitor Badges

Please include the name and contact information for the exhibitor badges included in the exhibit/sponsorship package that you have selected. Additional copies of this form may be used for packages above 4 badges. Any substitutions must be made prior to February 1, 2022.

TABLE TOP EXHIBITS INCLUDE TWO (2) INDUSTRY BADGES

Additional Industry Badges may be added to any level for \$795 per person, through February 1, 2022.

Primary Contact

Name _____

Title _____

Email _____

Cell # _____

For on-site contact

#2

Name _____

Title _____

Email _____

Cell # _____

For on-site contact

#3

Name _____

Title _____

Email _____

Cell # _____

For on-site contact

#4

Name _____

Title _____

Email _____

Cell # _____

For on-site contact

Booth Information

Please include the following information with your application and email everything to

Education@Neurovations.com.

- High resolution logo (300 dpi+)
- 50-word company description
- Company press kit, if available

Example



Neurovations Education creates unique learning experiences like the Kaua'i Pain Conference, Napa Pain Conference, and partners with organizations to manage or provide CME credits for national and regional events.

Location Requests

Identify your 3 preferred booth locations

Spaces are assigned according to the level of support, the date an exhibit payment is received, special needs and compatibility of exhibitors' products/services, and history of exhibiting at Neuroventions events.

Preferences

LOCATION IS NOT
GUARANTEED.

1 _____ 2 _____

3 _____

Special Requests

Such as, "If possible, place us near company X", or
"We would like distance between our booth and company Y":

Cancellations & Additional Terms

Written cancellation notice must be received via mail or email by January 16, 2022 in order to receive a 50% refund on the full amount of the contracted exhibit/ sponsorship. No refunds will be processed after this date.

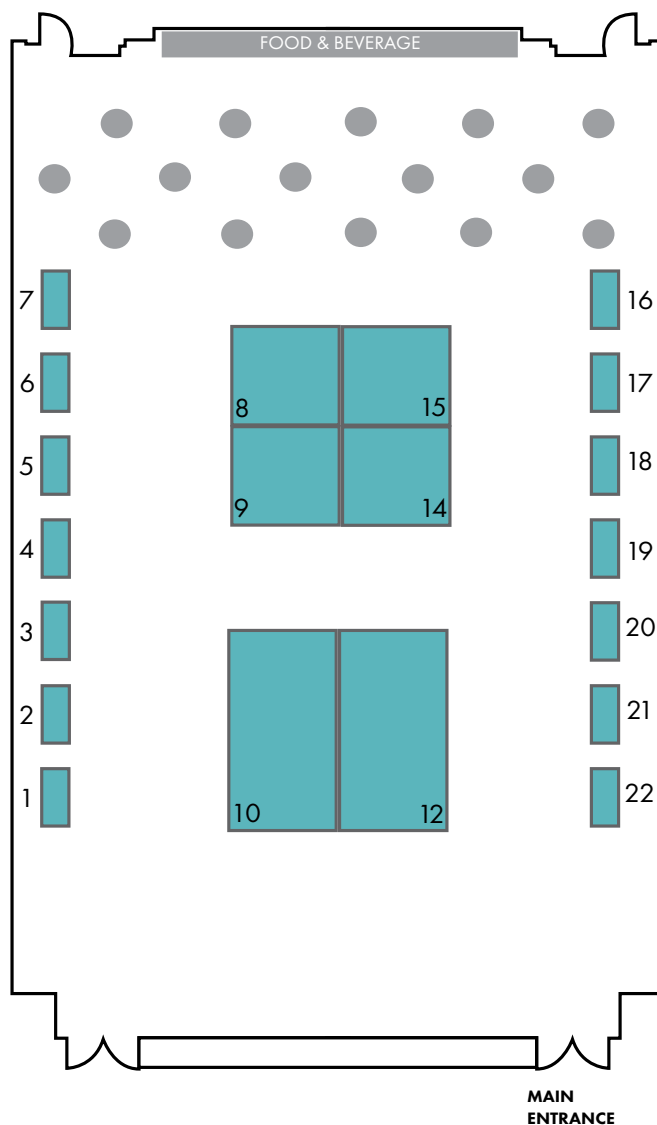
If the conference cannot take place due to acts of God, war, government regulations, disaster, strikes, civil disorder, or curtailment of transportation facilitating other emergencies making it inadvisable, illegal, or impossible to provide the facilities or to hold the meeting, each prepaid registrant/exhibitor will receive a copy all materials that would have been distributed. Fixed conference expenses will be paid from the pre-registration funds. Remaining funds will be refunded to pre-registrants/exhibitors. Neuroventions Education is not responsible for any other costs incurred by pre-registrants/exhibitors in connection with the conference.

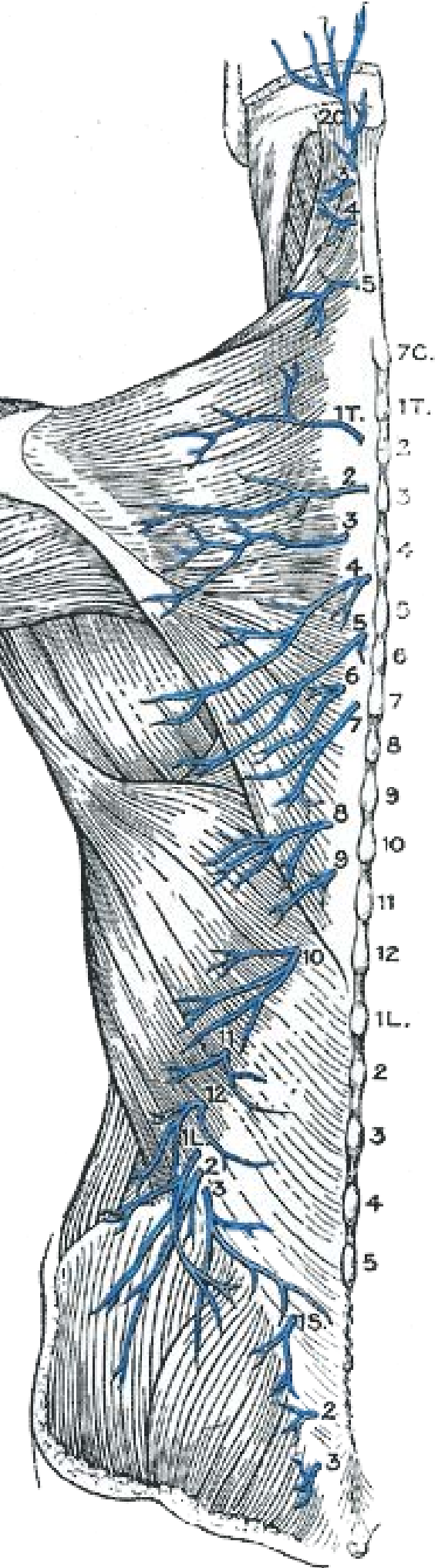
This is an application to exhibit. All exhibitor applications are subject to review and approval by Neuroventions Education. Moreover, we reserve the right to deny exhibitor privileges to any applicant.

Layouts and services depicted in this document are subject to change and refinement at the discretion of Neuroventions Education.

For additional conference details and to register individual attendees, visit

www.KauaiPainConference.com.





Neuromodulation THE SCIENCE

February 28 - March 2, 2022

Post-Conference Workshop: March 3, 2022

Lihue, HI

Neuromodulation: The Science advances research, dissemination of knowledge, and the implementation of new findings within neuromodulation. Conference founder, Elliot Krames, MD established the journal *Neuromodulation: Technology at the Neural Interface* in 1998 as the preeminent journal to advance basic science research in the field of neuromodulation. *Neuromodulation: The Science* is the next step.

New scientific discoveries are transforming neuromodulation technologies.

Join hundreds of clinician scientists, engineers, and neuroscientists Feb 28 - Mar 2, in Lihue, Hawai'i, for a dynamic conference on the science of neuromodulation. *Neuromodulation: The Science* combines the two largest conferences established to advance research, dissemination of knowledge, and implementation of new findings within neuromodulation.

Across implanted and non-invasive neuromodulation technologies, important discoveries on new mechanisms of action and methods of stimulation are emerging. This new science of neuromodulation is poised to transform clinical care, open up new indications, and support new technology platforms.

Exhibit and Sponsorship Opportunities are available!

Reach out to Education@Neurovations.com to learn more.